

June 2018

Press Release

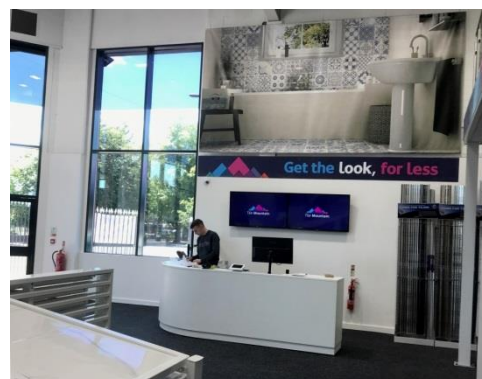
## **THERE'S MOUNTAIN EXCITEMENT AS NEW GREATER MANCHESTER SHOWROOM OPENS**

This weekend saw the official opening of **Tile Mountain's** new Stockport showroom. Spanning over 10,000 sq ft across two levels the new showroom is designed to showcase thousands of products that are available from the retailer. Tile Mountain Stockport is the second addition to the Company's growing retail estate. As with their flagship showroom the new one is conveniently located, open seven days a week, and offers free off street parking.

**Commenting about the new showroom Jeremy Harris, Managing Director of Tile Mountain said:** *"The phenomenal success of our flagship showroom in Stoke on Trent undoubtedly influenced our decision to embark upon a roll out of several showrooms at key locations across the UK, the first of which is this one in Stockport. Our showrooms aim to create a tile shopping experience like no other and when visiting them it's clear to see the level of planning and attention to detail that has gone into each - they're fantastic retail spaces that provide an unrivalled customer experience.*

*"In opening our new Stockport showroom we wanted to provide an environment that really showcases our extensive range of thousands of tiles and tiling products and emulate what we've achieved with our Stoke on Trent outlet, both in terms of footfall and sales and the favourable feedback we've received. Given what an excellent job our team has made of this new showroom and the fact that it's in a great location, we're positive that Tile Mountain Stockport will be equally as successful as our inaugural retail space."*

[www.tilemountain.co.uk](http://www.tilemountain.co.uk)



**For further press information please contact Alexandria Randell at Big Bark PR**

**E: [alex@bigbarkpr.co.uk](mailto:alex@bigbarkpr.co.uk) T: 01306 731331**

**The new, simple, smart way to buy quality tiles**