



WHITE POLISHED MARBLE EFFECT FLOOR TILE 590X590 : SKU NUMBER 451610 - CLEANING, SEALING & AFTERCARE

CONDITIONING CLEAN, SEALING & AFTERCARE

The following is a cleaning, sealing and aftercare guide for polished floor and wall tiles. The products featured should help ensure that surfaces are suitably conditioned and protected during installation and thereafter correct advice on aftercare that will not compromise protection offered by the sealers or leave any residues on the surface of the tiles.



INTENSIVE CLEANING....

1. CONDITIONING THE SURFACE TO REMOVE TRANSIT WAX (AFTER FIXING BEFORE SEALING)

LTP POWER STRIPPER



LTP Power Stripper is a high performance product for stripping and cleaning of polished and unpolished porcelain, vitrified glazed ceramics, travertine, natural stone, sandstone, slate, marble, granite, terracotta, quarry, brick, concrete, external paving, terrazzo and other mineral floors & walls. Helps remove old layers of sealer, transit wax and mineral oil deposits.

APPLICATION	1ltr	5ltr	25ltr
Surface Cleaning	60 M ² Per Bottle	300 M ² Per Bottle	1500 M ² Per Bottle
Deep Stripping	30 M ² Per Bottle	150 M ² Per Bottle	750 M ² Per Bottle
In Extreme Cases	15 M ² Per Bottle	75 M ² Per Bottle	375 M ² Per Bottle

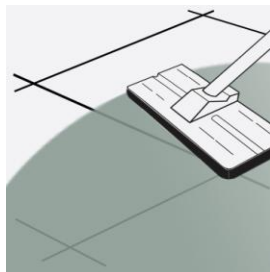
TECHNICAL FEATURES

- Non hazardous
- High performance
- Fast acting
- Easy to use
- Walls & floors
- Interior & exterior use
- Deep cleaning

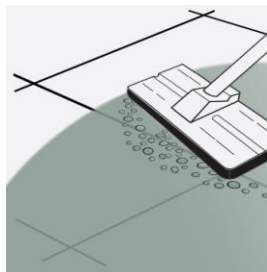
DIRECTIONS FOR USE – MANUAL APPLICATION – FLOORS & WALLS



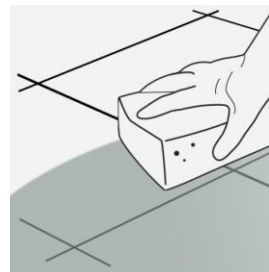
STEP 1.
Apply undiluted directly to the surface.



STEP 2.
Add a little water and agitate and spread out evenly. Leave for 5 minutes.



STEP 3.
Add a little more water and scrub surfaces to release the wax from the surface.



STEP 4.
Sponge up or extract released residues. Rinse with water.



STEP 5.
Allow surfaces to dry before allowing traffic or sealing.

This information is offered without guarantee. The material should be used so as to take account of the local conditions and the surfaces to be treated. In case of doubt, the product should be tried out in an inconspicuous area



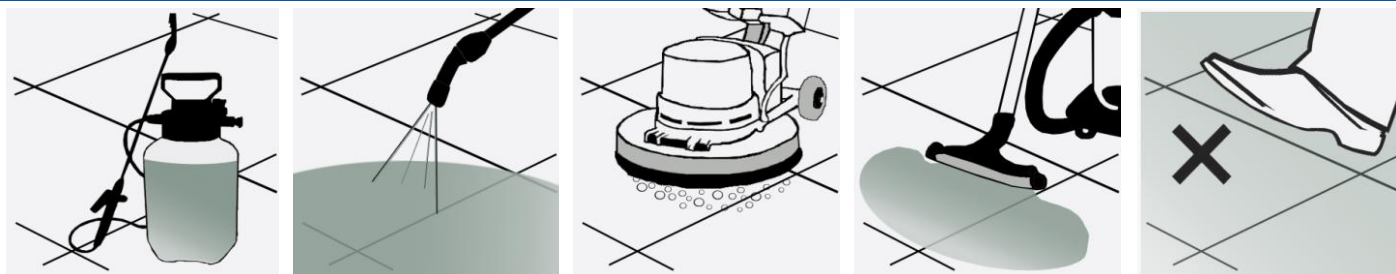
For any LTP product information call our technical helpline +44 (0) 1823 666213
Visit our website www.ltp-online.co.uk





INTENSIVE CLEANING CONT....

DIRECTIONS FOR USE – MECHANICAL APPLICATION - FLOORS



STEP 1.
Dilute solution 1 : 3 with cool water and fill light pressure sprayer.

STEP 2.
Working in manageable areas at a time spray the solution over the surface. Leave for 15 minutes.

STEP 3.
Releasing water from the on board tank, scrub surfaces and grout joints to release the transit wax residues.

STEP 4.
Sponge up or extract released residues. Rinse with water a second time and extract again.

STEP 5.
Allow surfaces to dry before allowing traffic or sealing.

SEALING....

2. PROTECTING POLISHED SURFACE AFTER INTENSIVE CLEANING

LTP MPG SEALER

A spirit based impregnating sealer. Buffs into the micro-pores to leave a delicately enhanced natural finish. Does not alter the polished appearance. Helps protect against staining. Treated surfaces strongly repel water, oil and grease. This product allows surfaces to breathe. Ideal for protecting porous surfaces. This product is non film forming.

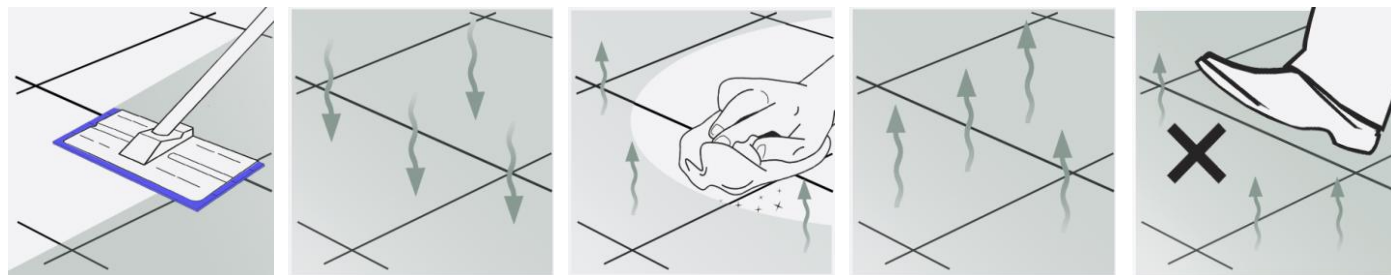


APPLICATION	1ltr	5ltr	25ltr
Polished surfaces	30 M ² Per Bottle	150 M ² Per Bottle	N/A

TECHNICAL FEATURES

- Spirit based
- High performance
- Invisible protection
- Easy to apply
- Interior & exterior use
- Breathable

DIRECTIONS FOR USE – MANUAL APPLICATION – FLOORS



STEP 1.
Apply sealer to the surface and spread out evenly using a sealant applicator. Work in manageable areas at a time.

STEP 2.
Allow sealer to absorb naturally for up to 10 minutes.

STEP 3.
While the sealer is still wet work it into the polished surface using a micro-fibre cloth. This will also help to remove any excess.

STEP 4.
Leave to dry.

STEP 5.
Newly sealed and finished surfaces should be left to dry for a minimum of 12 hours before allowing heavy traffic.

This information is offered without guarantee. The material should be used so as to take account of the local conditions and the surfaces to be treated. In case of doubt, the product should be tried out in an inconspicuous area



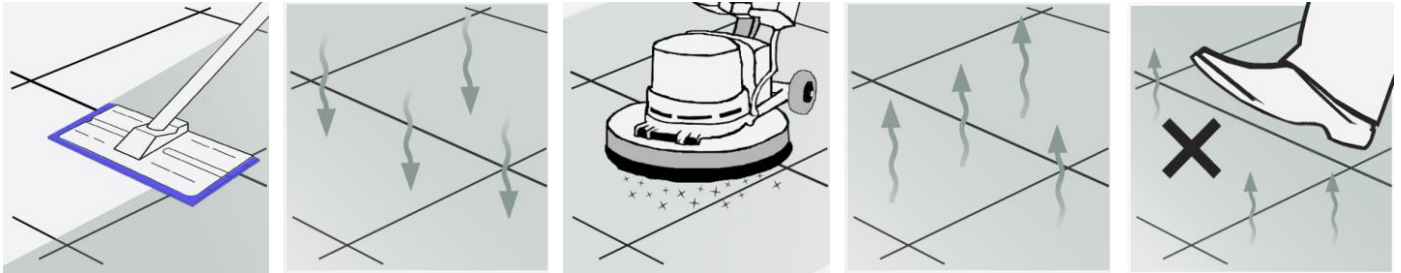
For any LTP product information call our technical helpline +44 (0) 1823 666213
Visit our website www.ltp-online.co.uk





SEALING CONT....

DIRECTIONS FOR USE – MECHANICAL APPLICATION - FLOORS



STEP 1.
Apply sealer to the surface and spread out evenly using a sealant applicator. Work in manageable areas at a time.

STEP 2.
Allow sealer to absorb naturally for up to 10 minutes.

STEP 3.
While the sealer is still wet work it into the polished surface using a rotary buffing machine. This will also help to remove any excess.

STEP 4.
Leave to dry.

STEP 5.
Newly sealed and finished surfaces should be left to dry for a minimum of 12 hours before allowing heavy traffic.

AFTERCARE CLEANING....

3. DAILY/WEEKLY CLEANING FLOORS

LTP PORCELAIN FLOOR TILE CLEANER



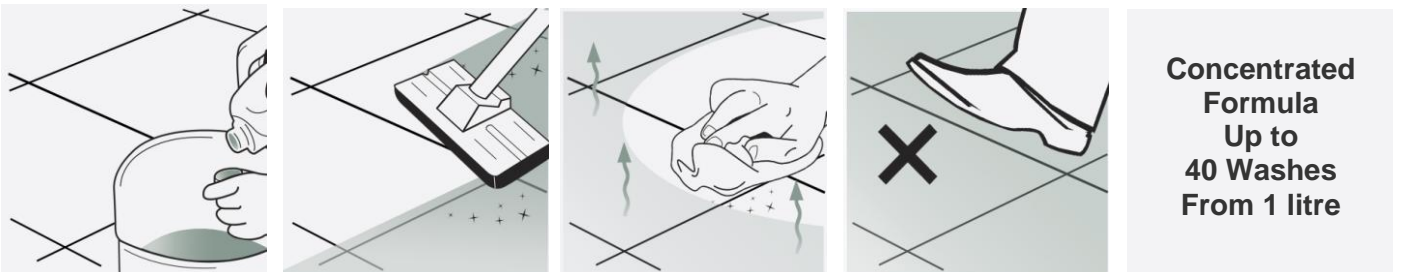
A gentle cleaner especially formulated to clean porcelain and ceramic without damaging the grout or tile, leaving the floor with a fresh clean fragrance. Suitable for use on polished and unpolished surfaces. Can also be used in scrubber drier machines if necessary. For more information refer to the technical data sheet.

APPLICATION	1 ltr	5 ltr	25 ltr
20 M ² surface	40 washes approx	200 washes approx	N/A

TECHNICAL FEATURES

- Environmentally friendly
- PH Neutral
- Phosphate free
- Non film forming
- Commercial & domestic
- Sealed and unsealed surfaces
- Fresh clean fragrance
- Interior & exterior use

DIRECTIONS FOR USE – MANUAL APPLICATION



STEP 1.
Dilute 1 capful of cleaner per litre of warm water.

STEP 2.
Mop surfaces with the solution.

STEP 3.
No need to rinse. Leave surfaces to dry. For best results on polished buff the surface to finish.

STEP 4.
Keep off of surfaces until they are completely dry.

**Concentrated Formula
Up to
40 Washes
From 1 litre**

This information is offered without guarantee. The material should be used so as to take account of the local conditions and the surfaces to be treated. In case of doubt, the product should be tried out in an inconspicuous area



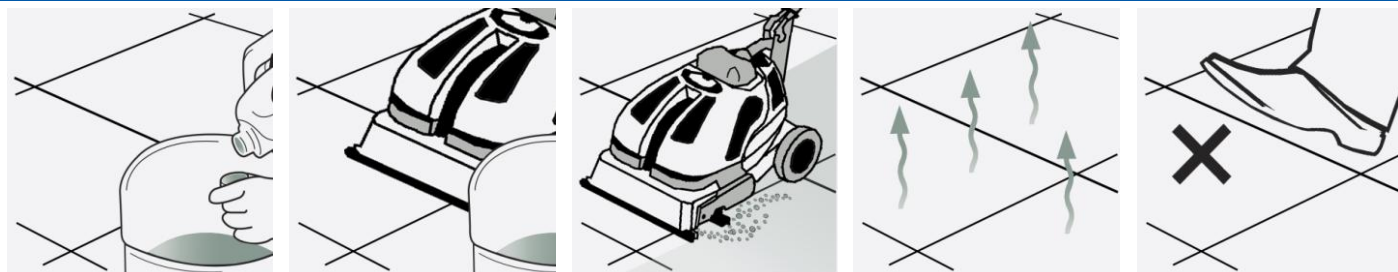
For any LTP product information call our technical helpline +44 (0) 1823 666213
Visit our website www.ltp-online.co.uk





AFTERCARE CLEANING CONT....

DIRECTIONS FOR USE - MECHANICAL APPLICATION:



STEP 1.
Dilute 1 : 20 with warm or cool water.

STEP 2.
Fill scrubber drier machine with the solution.

STEP 3.
Set solution release rate on the machine and scrub surfaces.

STEP 4.
Leave surfaces to dry naturally.

STEP 5.
Keep off of surfaces until they are completely dry.

4. DAILY/WEEKLY CLEANING - WALLS



LTP STONEWASH SPRAY

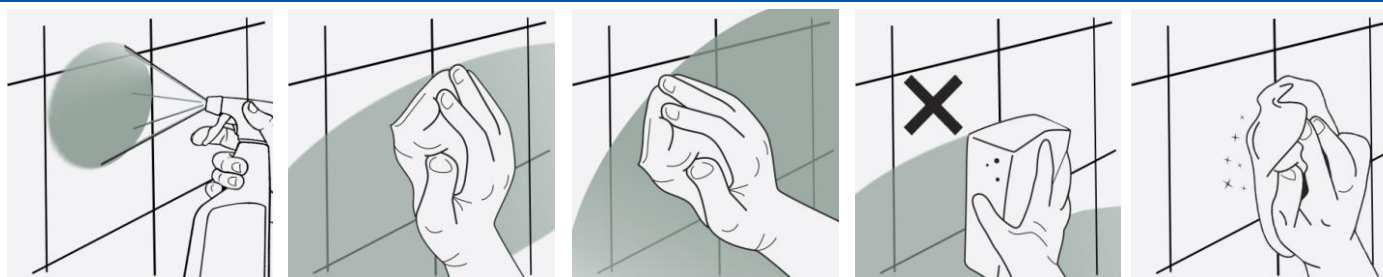
Spray and wipe ph neutral cleaning for delicate and sealed surfaces. Cleans without compromising the protection offered impregnating sealers or damaging the surface of the stone. This cleaner can also be used on stone work tops, glass, stainless steel, wood, laminate and sanitary ware.

APPLICATION	500 ml	1 ltr	5 ltr
Daily Surface Cleaning	Approx 1 month use	N/A	N/A
Weekly Surface Cleaning	Approx 6 months use		

TECHNICAL FEATURES

- PH Neutral
- Non hazardous
- Non film forming
- Commercial & Domestic
- All Hard Surfaces
- Interior & Exterior Use

DIRECTIONS FOR USE:



STEP 1.
Spray a small amount of cleaner onto the surface.

STEP 2.
Wipe over the surface using a damp cloth. Leave for 15 minutes to remove heavy deposits of dirt and grime.

STEP 3.
Wipe surfaces again with a cloth to lift the released dirt and grime.

STEP 4.
Leave surfaces to dry. No need to rinse.

STEP 5.
On polished surfaces dry buff to finish.

FURTHER INFORMATION - AFTERCARE:

Avoid using **steam cleaners** and strong alkali or acid based cleaning detergents on floors, as they can compromise protection offered by impregnating sealers and grout protectors. Some detergents can leave a residue that builds up on the surface and this can have a dulling effect on the surface of polished porcelain. Cleaning surfaces routinely with a PH neutral cleaner should ensure that surfaces remain clean and free of any residue, which can sometimes build up when other types of cleaner are used. Neglected or grubby looking surfaces can be restored by intensively cleaning using LTP Grimex. Intensively cleaned polished porcelain may require re-sealing, in which case we would suggest using **LTP MPG Sealer**.

If mould and mildew is an issue use **LTP Mouldex** to kill and remove any mould spores.

This information is offered without guarantee. The material should be used so as to take account of the local conditions and the surfaces to be treated. In case of doubt, the product should be tried out in an inconspicuous area



For any LTP product information call our technical helpline +44 (0) 1823 666213
Visit our website www.ltp-online.co.uk

