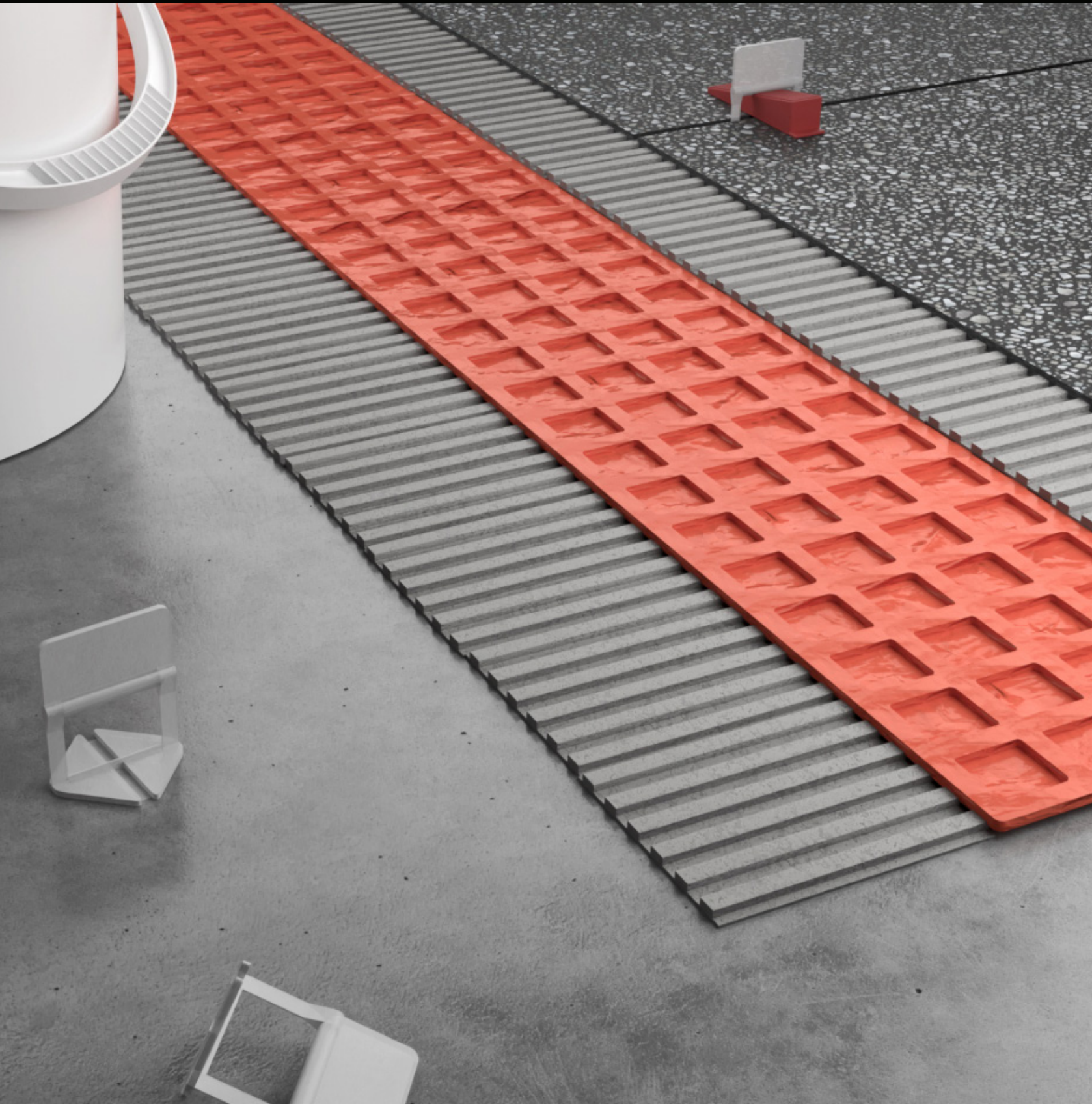


PROTOOLS

Uncoupling Membrane (UM)

TECHNICAL DATA - INSTALLATION INSTRUCTIONS



PROTOOLS

Uncoupling Membrane (UM)

TECHNICAL DATA

About Tileasy Uncoupling Membrane:

Tileasy Membrane is a 2-part anti-fracture matting which is suitable for underlaying on floors prior to tiling porcelain, ceramic, and natural stone tiles, which can be used internally or externally.

Why use UM:

Anti-fracture – Prevents transmission of minor cracks and stresses from the substrate to the tiled surface (not to be applied over structural cracking).

Waterproof – Protects substrate from water ingress, so ideal for bathrooms/wet-rooms in conjunction with sealing tapes & corner joints.

Moisture vapour release – Allows moisture within substrate to evenly evaporate through specifically designed air channels.

Early tile installation – As long as cementitious screed has set enough for foot traffic, UM can be laid and tiled prior to being fully cured.

Improved strength and bond – UM allows even distribution of load stresses whilst also improving the bond between the substrate and adhesive due to the membrane design.

Anti-aging & corrosion resistant.

Where To Use Tileasy Uncoupling Membrane:

For internal & external use (must be applied within recommended installation temperature).

Commercial & domestic settings, either new or existing renovations. Provided the surface is level & load bearing UM can be applied to the following substrates:

- Concrete
- Cementitious screeds
- Anhydrite screeds (must be sealed with suitable primer)
- Ceramic/stone
- Wood

As UM is waterproof it can be used to tank wet areas such as bathrooms, showers etc prior to tile installation. However, always ensure all joints and corners are sealed using Tileasy waterproof membrane jointing tape and corners. UM can be applied in addition to underfloor heating and assists with an even heat distribution.

Uncoupling Membrane (UM) Technical Data

Length: 30M ± 20cm

Width: 1m ± 2cm

Thickness: 3.3mm ± 0.2mm

Weight: 500g/m² ± 20g

Material: HDPE + PP

Max Storage Temp: 40°C (keep out of direct sunlight)

Melting Temp: 110°C

Installation Temp: 0°C to 34°C

Tensile Strength: 12-15N/mm



Uncoupling Membrane (UM)

INSTALLATION INSTRUCTIONS

Uncoupling Membrane Installation Instructions

Preparation

The substrate must be flat, clean, dry, adequately load bearing and free from material which may prevent bond of the adhesive.

The tile adhesive must bond to the substrate, and anchor mechanically to the fabric on the underside of the uncoupling membrane.

The type of bonding adhesive used to apply the uncoupling membrane depends on the type of substrate. For most substrates, a premium modified thin set mortar is recommended (c2 quality). However please consult your adhesive supplier.

Apply the tile adhesive to the substrate using a 6 x 6mm square notched trowel. (Tileasy product code **6mmnt**)

Estimated coverage is 8-10m² per 20kg bag of adhesive.

Membrane Installation

Measure and cut the uncoupling membrane to required size.

Solidly embed the anchoring fibre fabric on the underside of the uncoupling membrane into the tile adhesive so that its entire surface is bonded.

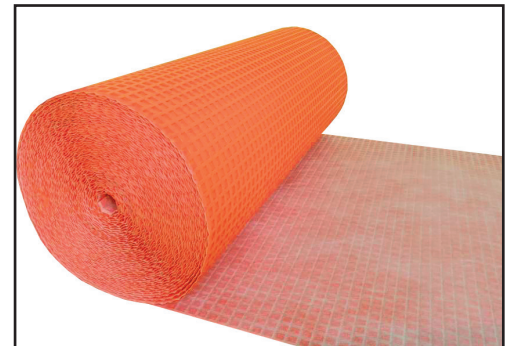
Work the uncoupling membrane into the adhesive, in one direction, using a float or flat trowel.

Position the uncoupling membrane initially, and then readjust alignment by lifting one end, pulling lightly, and then placing the tensioned underlay more precisely.

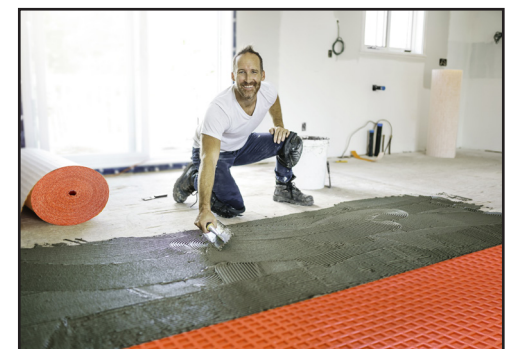
Installation is easier with two people working together.

The edges of the uncoupling membrane rolls are cut to fit and placed edge to edge.

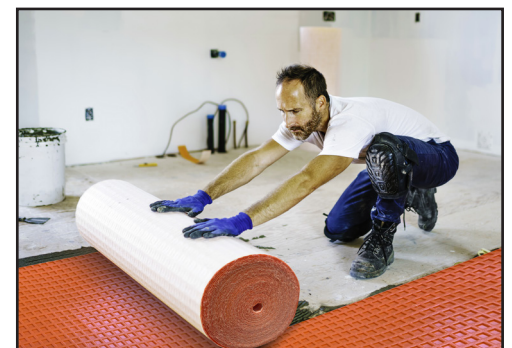
Observe the open time of adhesive.



Roll and cut membrane to desired length



Mix and lay adhesive with notched trowel



Position and install membrane



Install tiles onto membrane

PROTOOLS

Uncoupling Membrane (UM)

INSTALLATION INSTRUCTIONS

Tile Installation

Once installed, the uncoupling membrane must be protected against heavy mechanical loads to avoid loosening it from the substrate or other damage, prior to laying tiles.

Immediately after the installation of the uncoupling membrane, the tiles may be laid on top using the thin bed method. By filling voids with the flat side of the trowel first and then comb ensuring 100% coverage.

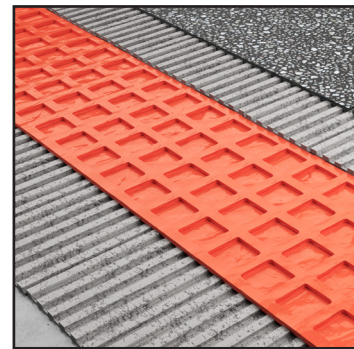
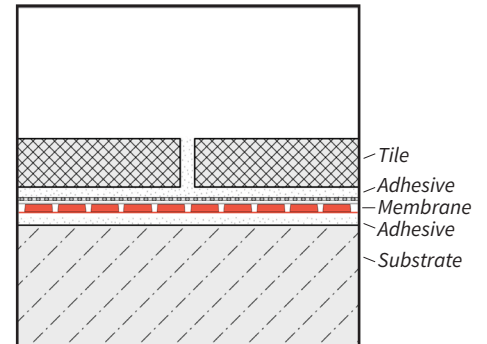
For porcelain tiles use a premium fast setting modified mortar.

Avoid lining up the grout lines with the uncoupling membrane joint lines.

Match the notch size of the trowel to the type and size of the tile.

Observe the open time of adhesive.

Installation of Tileasy uncoupling membrane (UM) does not remove the need for expansion joints, as their application is important to absorb differential movement within the substrate. Installation is particularly critical when underfloor heating has been installed, as potentially there can be increased movement caused by significant thermal changes. Perimeter and intermediate expansion joints (including door thresholds) should always be installed as recommended within the British Standard BS5385.



PROTOOLS



Tileasy Ltd
Unit 14
Dakota Business Park
Havant
PO92NJ

02392 455050
sales@tileasy.com
www.tileasy.com